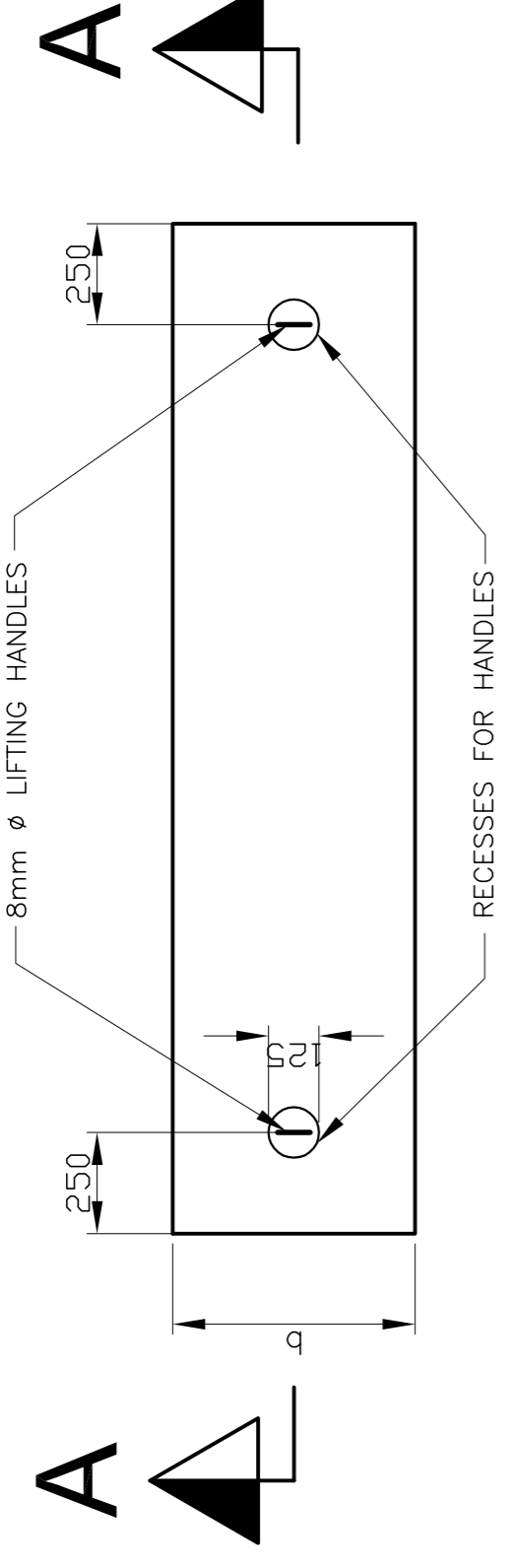


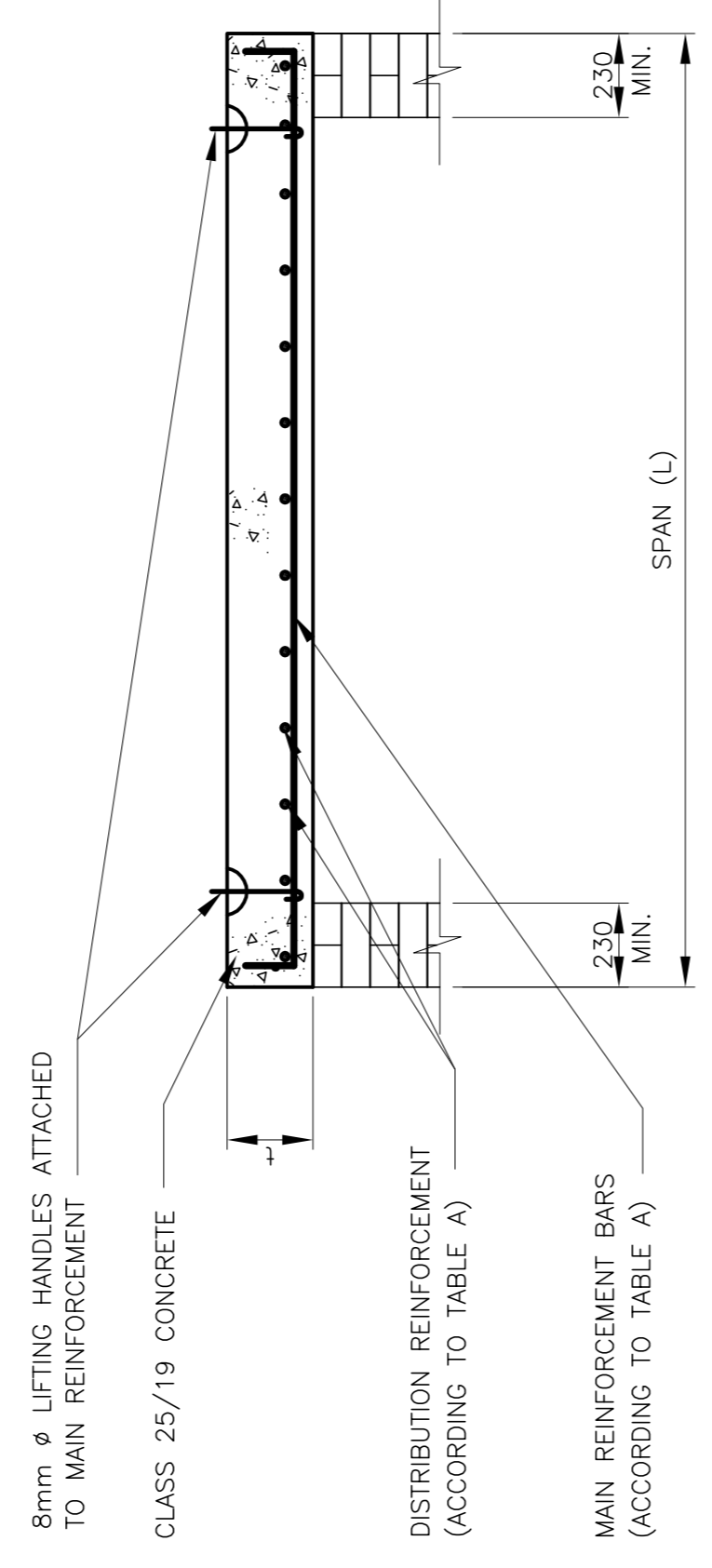
NOTES

1. JUNCTION BOX CONFIGURATION
 - 1.1 Symbols used to indicate the junction box types are only for purposes of this drawing, and not applicable to working drawings.
2. PRECAST COVER SLABS
 - 2.1 Concrete to be class 25/19 (25MPa)
 - 2.2 Concrete to be cured for a minimum period of 7 days.
 - 2.3 Minimum cover to reinforcement = 20mm
 - 2.4 Lifting handles as specified or otherwise approved by the Engineer.
 - 2.5 Reinforcement
 - i) Type, bar and spacing as specified in Table A.
 - ii) Main reinforcement to be shape code 38, with hook length (A dimension) not less than $t - 60$, except for slabs with a span not exceeding 1000mm, no hooks are required and shape code 20 is used.
 - 2.6 Also refer to sections 502, 702, 703 and 704 of the Stormwater Specifications for Municipal Civil Engineering Works, 3rd Edition, 2005.

PRECAST COVER SLAB FOR JUNCTION BOXES



PLAN OF PRECAST COVER SLAB
SCALE 1:20



SECTION A-A
SCALE 1:20

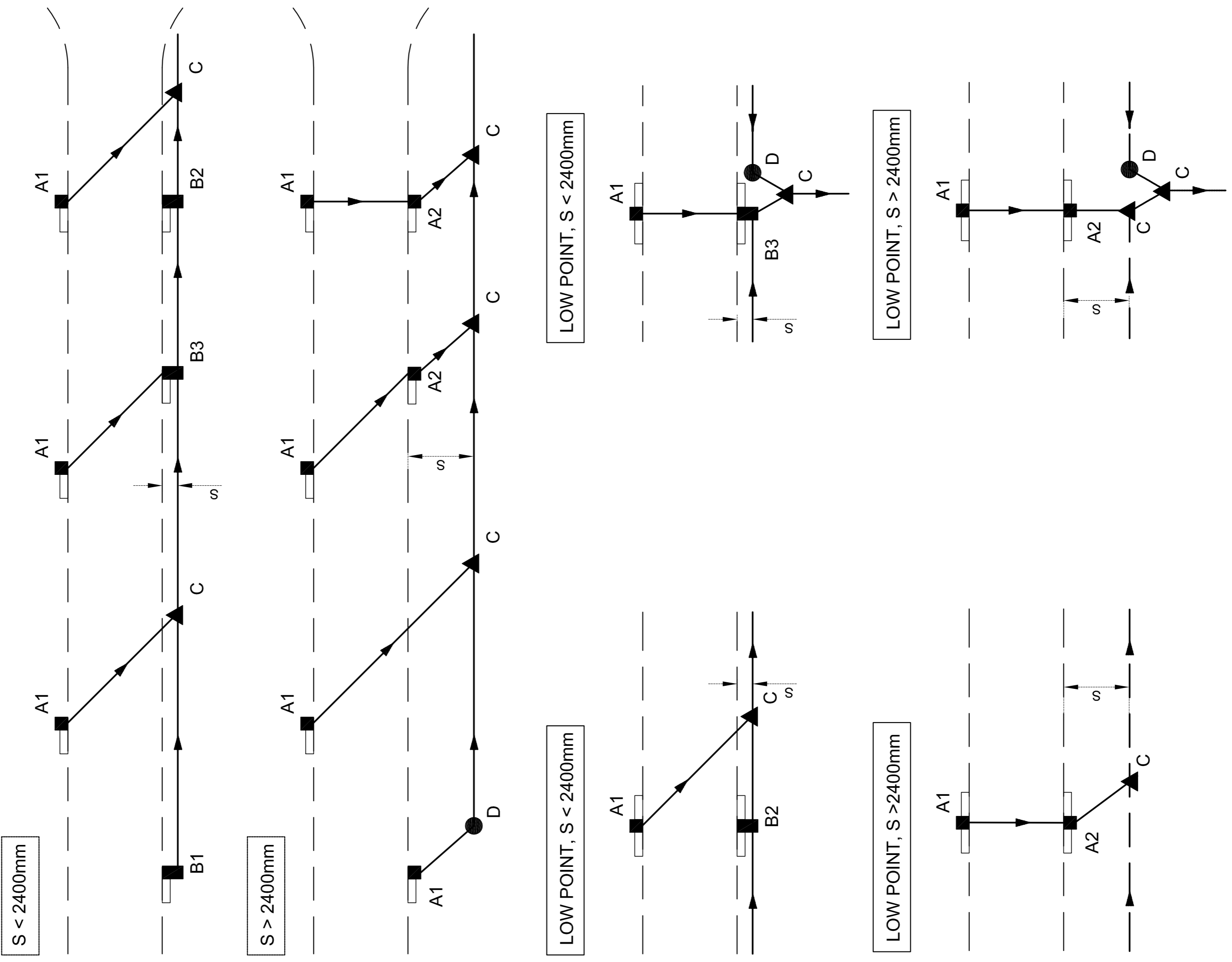
TABLE A: PRECAST COVER SLAB REINFORCEMENT DETAILS

Span (mm) L	Thickness (mm) t	Main Reinforcement	
		b = 450	b = 600
Up to 500	125	4Y12 -125	5Y12 -125
Up to 1000	150	5Y12 -100	5Y12 -125
Up to 1250	150	4Y16 -125	5Y12 -125
Up to 1500	175	4Y16 -125	5Y12 -125
Up to 1750	175	4Y16 -125	5Y16 -125
Up to 2000	200	4Y16 -125	5Y16 -125
Up to 2250	200	4Y16 -125	5Y16 -125
Up to 2500	200	5Y16 -100	5Y16 -125
Up to 2750	225	5Y16 -100	5Y16 -125
Up to 3000	225	5Y16 -100	5Y16 -125

Distribution reinforcement: Y10 bars @ 125 c/c for all spans
Refer to notes for bending details.

TYPICAL JUNCTION BOX CONFIGURATIONS

- LEGEND:**
- A-TYPE JUNCTION BOX TO CONNECT CATCHPIT WITH PIPES, SIZE: 900mm x 600mm
 - B-TYPE JUNCTION BOX TO CONNECT CATCHPIT WITH PIPES, SIZE: 900mm x VARIES
 - 1 CONNECTING 1 PIPE TO JUNCTION BOX AT CATCHPIT
 - 2 CONNECTING 2 PIPES TO JUNCTION BOX AT CATCHPIT
 - 3 CONNECTING 3 PIPES TO JUNCTION BOX AT CATCHPIT
 - C-TYPE JUNCTION BOX CONNECTING 3 PIPES (NO CATCHPIT), SIZE VARIES
 - D-TYPE JUNCTION BOX CONNECTING 2 PIPES (NO CATCHPIT), SIZE VARIES
 - ROAD EDGE
 - STORMWATER PIPE AND DIRECTION OF FLOW
 - CATCHPIT
 - S DISTANCE FROM ROAD EDGE TO FURTHEST WALL OF PIPE OF CULVERT



AMENDMENTS		CONSULTANTS DETAIL	
NO.	DATE	DESCRIPTION	PREPARED BY

ROADS AND STORMWATER		WATER AND SANITATION	

CITY OF TSHWANE
PUBLIC WORKS & INFRASTRUCTURE DEVELOPMENT

ACTING: V KOBUWE
STRATEGIC EXECUTIVE DIRECTOR

ROADS AND STORMWATER
MIS. L. MCHUNU
EXECUTIVE DIRECTOR
P.O. BOX 409
1016 TSHWANE

WATER AND SANITATION
F. J. SHEROP
EXECUTIVE DIRECTOR
P.O. BOX 409
1016 TSHWANE

DRAWING COMPILED		DRAWING CHECKED BY		DRAWN	

TYPICAL STANDARD DETAILS

JUNCTION BOX AND MANHOLE DETAILS

TYPICAL JUNCTION BOX CONFIGURATION AND COVER SLAB DETAIL

CONTRACT NO.: **STD004**

SHEET NO: **1 OF 6**

PROJECT STATUS		PROJECT ENGINEER		SUPERVISOR OF WORKS	

