

IMESA

Mission statement

To promote excellence in municipal engineering amongst its members for the benefit of the community.

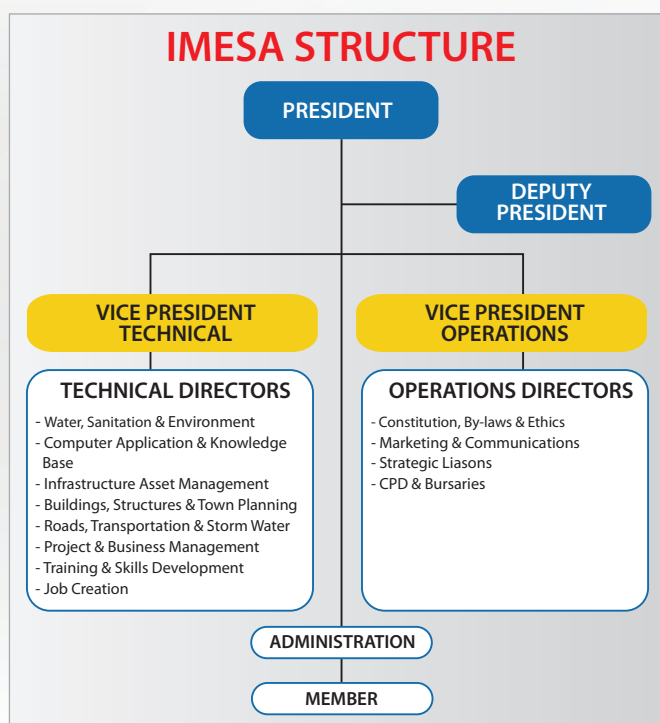
Overview

The Institute of Municipal Engineering of Southern Africa (IMESA) promotes the interests of municipal engineers and their profession, and creates a platform for the exchange of ideas and viewpoints on all aspects of municipal engineering with the aim of expanding the knowledge and best practices in all Local Government municipalities. Since 1961, IMESA has played a significant role in municipal engineering, sharing knowledge and acting as a catalyst in developing new initiatives. Municipalities are key role-players in identifying needs, prioritising funding and implementing integrated development planning for community-based programmes. The Institute also advises Councils on municipal engineering matters and serves the broader community through representation on a number of national bodies, where it provides input from the municipal engineer's perspective.

Benefits and services to members

IMESA Journal

Members of IMESA are granted free subscription to the IMESA journal, a highly informative monthly publication that serves as a mouthpiece for the engineering fraternity by disseminating cutting-edge technical news and developments. The journal has received the prestigious PICA Award for the best publication of its kind in the Urban Management, Civil Construction and Infrastructural Development categories.



IMESA website

The IMESA website offers members and potential members a forum for opinion, news and support relating to the municipal engineering industry.

Seminars

Branches organise regular full- and half-day seminars, which feature speakers from both the technical and contemporary arenas. These seminars also provide opportunities to introduce new products in the technical field and to brief members and politicians.

Annual conferences

IMESA hosts an annual conference. Opportunities for members to gain valuable information and insight into issues facing the municipal engineering fraternity include the presentation of topical papers, product exhibitions and an opportunity to share and discuss ideas with like-minded engineers, municipal representatives and non-technical associates.

Bursary scheme

In 2000, IMESA established a bursary scheme for full-time studies in the field of civil engineering. Bursaries are awarded each year, as per our bursary policy.

The aims of the scheme are:

- To provide financial assistance to students who can't afford to study.
- To recognise achievements of students and prospective students who are dependants of IMESA members.

IMESA training

IMESA offers a range of training courses covering all aspects of Infrastructure Asset Management and other priorities relevant to engineering and municipal environments.

IMESA membership categories/grades

Corporate members

Professional members

They shall be persons who:

- Are registered by ECSA or an equivalent engineering council recognised by ECSA as full professionals in at least on one of the following categories:
 - professional engineer
 - professional engineering technologist
 - professional engineering technician
 - professional certified engineer
 - registered engineering technician
- Had at least three years infrastructure engineering experience after achieving a qualification recognised by ECSA or an equivalent engineering council recognised by ECSA for registration
- Have been admitted as such by the Executive Committee
- Having failed to comply with the requirements of the clauses above, have been admitted by Council, on the unanimous recommendation of the Executive Committee based on their opinion that such persons have the experience, employment responsibility or involvement in infrastructure engineering or made such a contribution to infrastructure engineering which in the interests of the Institute justifies such admission.

Non-corporate members

Graduate members

They shall be persons who:

- Are registered/eligible for registration by ECSA or an equivalent engineering council recognised by ECSA in at least one of the following categories:



Subscription fees: July 2015 – June 2016

ENTRANCE FEE	
Member (all categories)	R210
ANNUAL CORPORATE MEMBER FEES	
Fellow	R870
Professional	R870
Retired Fellow	R250
Retired Professional	R250
ANNUAL NON-CORPORATE MEMBER FEES	
Graduate	R415
Student	R220
Associate	R520
Retired Non-corporate	R220

- candidate engineer
- candidate engineering technologist
- candidate engineering technician
- candidate certified engineer
- Are admitted as such by the Executive Committee
- Have been admitted by Council on the unanimous recommendation of the Executive Committee based on their opinion that such persons have the experience, employment responsibility or involvement in infrastructure engineering or have made a contribution to public sector engineering which in the interests of the Institute justifies such admission.

Student members

They shall be persons who are:

- Enrolled students at a local or international university/technical

- university recognised by ECSA
- Studying towards a degree/diploma in engineering
- Admitted as such by the Executive Committee.

Associate members

They shall be persons who:

- Have satisfied the Executive Committee that they are involved in an aspect of infrastructure engineering
- Are admitted as such by the Executive Committee.

Affiliate members

They shall be those academic, research, consulting, commercial, industrial or others undertakings who:

- Are in the opinion of the Executive Committee, involved in business related to infrastructure engineering
- Are admitted as such by the Executive Committee.

CONTACT DETAILS

The head office of IMESA is situated in Durban (in KwaZulu-Natal, South Africa) and the address is as follows:

Street address:

IMESA House, 2 Derby Place, Derby Downs Office Complex, Westville, 3629, KwaZulu-Natal, South Africa

Postal address:

PO Box 2190, Westville, 3630, KwaZulu-Natal, South Africa

Contact numbers:

t +27 (0)31 266 3263 • f +27 (0)31 266 5094 • c +27 (0)71 608 1480



**AFRICAN INSPIRATION
GLOBAL STRENGTH**

**WITH PROJECTS IN 39 AFRICAN COUNTRIES,
MOTT MACDONALD IS DEVELOPING THE
INFRASTRUCTURE REQUIRED FOR SOCIAL AND
ECONOMIC GROWTH.**

Mott MacDonald is a global management, engineering and development consultancy adding value for public and private clients on agenda-setting, next-generation projects worldwide. We use our ingenuity to save our customers money and time, reduce risks, increase efficiency, maximise sustainable outcomes and advance best practice.

Our Sub-Saharan Africa business with 800 people in 15 centres across South Africa, Botswana, Mozambique, Uganda and Mauritius, combines complementary skills, African experience, leading edge abilities and best practice into a single-source, capable of delivering the complex next-generation projects that will drive Africa's social and economic success. Our African business model is geared to provide advisory, design and management services to public and private sector clients.

OUR 10 CORE BUSINESS SECTORS IN AFRICA INCLUDE:

- > Buildings and Infrastructure
- > Highways and Bridges
- > Infrastructure Finance
- > International Funding Institutions
- > Mining and Ports
- > Power
- > Railways
- > Tunnelling and Geotechnical
- > Urban Development
- > Water and Environment