

DPI Trading

The most trusted name in quality products & brands

Welcome



D A W N

Member of the Dawn Group



PIPES



FITTINGS

FLANGES



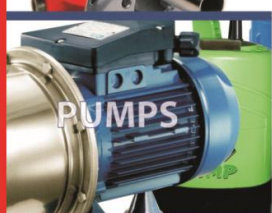
PIPE
COUPLINGS



VALVES



PIPE
WORKING
TOOLS



PUMPS



IRRIGATION

DPI Trading

The most trusted name in quality products & brands

Company Introduction



DAWN
Member of the Dawn Group

Vision

DPI Trading is a LEADING supplier of quality fluid conveyance products and solutions and is acknowledged as a preferred supplier, employer and distributor that fulfils the expectations of all its stakeholders



Mission Statement

DPI Trading is a professional, well structured, National Supplier of Quality Fluid Conveyance products and solutions to the industrial, engineering, mining, municipal, civil, plumbing merchant and irrigation markets. DPI Trading achieves planned results and meets customer expectations through:

- * Providing world class innovative products and technology**
- * Supply and distribution of quality product brands and services**
- * Excellent customer orientation and service by providing skilled knowledge to its customers**
- * Committed, motivated, skilled and empowered staff through focus and team work**
- * Making systematic progress with employment equity in a value adding manner.**



Values

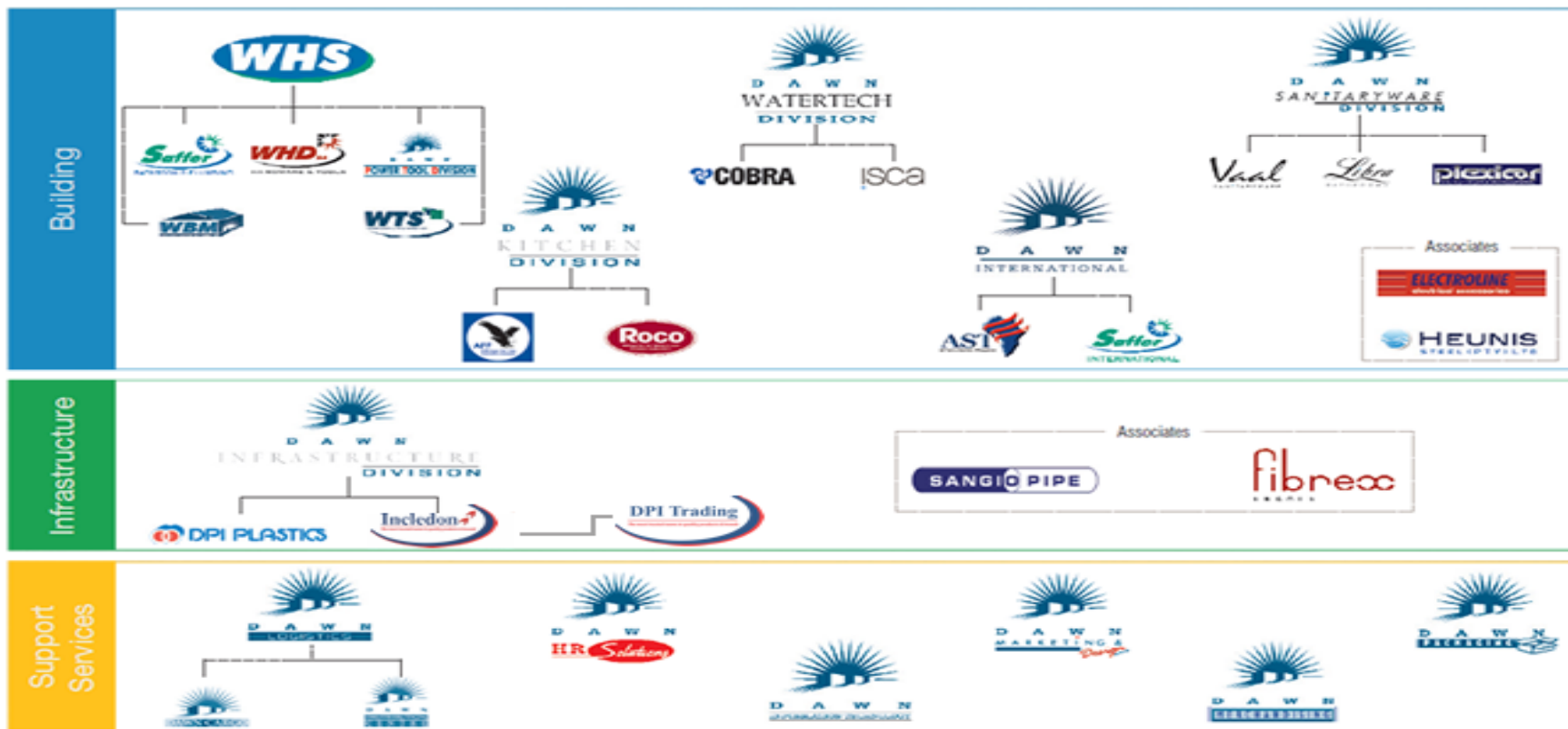
- * **Honesty and Integrity**
- * **Mutual respect and trust**
- * **Loyalty**
- * **Co-operation and commitment**
- * **Participation**
- * **Transparency and openness**
- * **Performance**



Dawn Group Structure



D A W N
Distribution and Warehousing Network Limited



BBBEE Status & Certification

DPI Trading continues to focus on it's BBBEE status, and received it's Level 3 rating in 2013. The Company is a totally dedicated, leading organisation, that ensures its products and services objectives are achieved through the principle of "Quality Comes First". DPI Trading is committed to providing service integrity and sustainable, quality products to the infrastructure and industrial markets.

DPI Trading is furthermore committed to providing products that meet or exceed local and international standards, both in quality, reliability and performance.





Corporate Video



DAWN

DPI Trading

The most trusted name in quality products & brands

Introduction to Product Ranges



DAWN
Member of the Dawn Group

Steel Pipes & Fittings

A STEEL PIPE AND TUBING

- i SANS 62 Galvanised Steel Tubing (Randoms & Exacts)
- ii BS1387 Galvanised Steel Tubing
- iii SANS 62 Uncoated and Coated Steel Tubing
- vii SANS 62 Flared and Threaded Pipe
- iv SANS 719 Large Bore Steel Tube
- v ASTM A106B Seamless Tube
- vi ASTM A106B Seamless Tube (Large Bore)
- viii KLAMBON Steel Pipe Solutions (Victaulic Ends)
- ix Galvanised Standpipes
- x Steel Flanged Pipe



B STEEL PIPE FITTINGS

- i EN 10242 (BS143) Malleable Pipe Fittings- Galvanised (SANS 14)
- ii EN 10242 (BS143) Malleable Pipe Fittings- Black (SANS 14)
- iii EN 10241 (SANS 62-2) Wrought Steel Tubular Fittings



Steel Pipes & Fittings

C STEAM PIPE FITTINGS

- i EN 10241 (BS1740) Steam Wrought Steel Fittings (HIC)
- ii ASME A105 3000LB Forged High Pressure Fittings



D BUTTWELD PIPE FITTINGS

- i JIS B2311 Carbon Steel Buttweld Fittings (HIC)
- ii ASTM A234 WPB GR43 Carbon Steel Buttweld Fittings



E PIPE FLANGES

- i Bs10 & SABS 1123 Forged, Bossed Flanges (HIC)
- ii BS10/BS4504 & SABS 1123 CS,SO,FF, Plate Flanges (HIC)
- iii ASA/ANSI 150/300 Forged Carbon Steel Flanges
- iv Backing Rings/Flanges Galvanised (HIC)



PVC Pipe & Fittings

G PVC PIPE & FITTINGS

- i Pressure Pipes UPVC (DUROFLO) -SANS 966
- ii Pressure Pipes MPVC (ULTRAFLO) -SANS 966
- iii Pressure Pipes OPVC (GEMINI BIAx) -SANS 16422
- iv Mine Pipes PVC (MINEFLO) -SANS 1283
- v Sewer & Drain Pipes/Fittings (DURODRAIN) -SANS 791
- vi Sewer & Drain pipes (ULTRACOR) -SANS 1601
- vii Soil,Vent and Waste Pipes/Fittings (FREEFLO) -SANS 967
- viii Subsoil drainage and Cable Ducting (DUROCOR / DURODUCT)
- ix Flexible PVC Hoses (DUROFLEX) - SANS 1086



H PVC PRESSURE FITTINGS

- i Solvent Weld PVC Pressure Fittings (MMP)
- ii Fabricated PVC Fittings - Pressure
- iii Fabricated PVC Fittings - Soil,Vent/Underground
- iv PVC Pipe Accessories (DPI)
- v Solvent Weld Cement for PVC (TANGIT) -SANS 1655
- vi Shouldered Fittings and Couplings (MINEFLO)



HDPE Pipe & Fittings

I HDPE POLYETHYLENE PIPING

- i AQUAFLOW PE 63 HDPE Piping - SANS 4427
- ii AQUAFLOW PE 80 HDPE Piping - SANS 4427
- iii AQUAFLOW PE100 HDPE Piping - SANS 4427
- iv STARWAY HDPE Stormwater & Drainage Piping



J HDPE PIPE FITTINGS

- i PLASSON Compression Fittings/Saddles/Valves - SANS 14236/SANS 1808-44
- ii PLASSON Polypropylene Threaded Fittings
- iii PLASTICA ALFA Compression Fittings/Saddles - SANS 14236
- iv PLASTICA ALFA Threaded Fittings
- v PLASSON Electrofusion Fittings and Control Boxes
- vi HDPE Pipe Fittings (Moulded & Fabricated)
- vii Galvanised Backing Rings for HDPE Pipe Systems



Plumbing Products & Pipeworking Tools

Q PIPEWORKING TOOLS

- i RIDGID Hand Tools
- ii RIDGID Threading Machines and accessories
- iii RIDGID/KOLLMAN Drain Cleaning Machines
- iv RIDGID Spares



R PLUMBING PRODUCTS

- i SANS 460 Copper Tubing
- ii Brass Compression Fittings (COBRA) -SANS 1067
- iii Polycop Plumbing Pipe -SANS 1315
- iv PLOMYCLICK Pipe & Fittings -SANS 21003
- v COPRAX PEX Piping and Fittings -SANS 15874
- vi Drain Cleaning and Testing Equipment



Irrigation Products

K IRRIGATION PRODUCTS

- i TORO Residential Sprinklers & Accessories
- ii TORO Golf Sprinklers & Accessories
- iii MICROJET Irrigation
- iv FULLFLOW Irrigation Fittings
- v Nylon Insert Fittings
- vi Polyprop Insert Fittings
- vii PVC Standpipes
- viii EMJAY Polypropylene Threaded Fittings/manifolds
- ix LDPE Polyethylene Piping for Irrigation
- x HDPE non-SABS Polyethylene Piping for Irrigation
- xi Dragline Hoses (DUROLFEX)
- xii DURA Valve Boxes & Irrigation Fittings
- xiii Plastic Water Tanks
- xiv Geka Hose Clamps (for use with Drag lines)
- xv Hose Clamps
- xvi RAINBIRD residential sprinklers
- xvii Pumps Electrical Cables



Pumps

L PUMPS

- i PENTAX Booster and Submersible Pumps
- ii PENTAX Borehole Pumps
- iii PENTAX Pump Accessories
- iv PENTAX Variable Speed Drives
- v FRANKLIN Borehole Motors, Control Boxes & Accessories
- vi EASY PUMP Booster & Submersible Pumps
- vii DWT Pumps & Motors -Brisan Pumps / Tesla Motors / WACS VSD
- viii SIGMA Semi Rotary Hand Pumps
- ix GRUNDFOS Pumps (ALL)
- x CEMO Borehole Positive Displacement Pumps
- xi CEMO Industrial Positive Displacement Pumps
- xii CLIMAX Windmills & Accessories
- xiii MONO Borehole Pumps & Accessories
- xiv Pump - Pool
- xv Pump Controls and Drives
- xvi Pump Accessories Mechanical
- xvii Pump Accessories Electrical



Valves General Purpose & Industrial

M VALVES - General Purpose

- i TEKFOLO® Brass Valves
- ii COBRA Engineers Brassware
- iii TEKFOLO® D.I Butterfly Valves - Wafer Type
- iii TEKFOLO® D.I Valves, Wafer & Flanged
- iv TEKFOLO® C.I Flanged Ball Valve PN16
- v COBRA - Brass Rough Brass Taps, Float & Check Valves



N VALVES - INDUSTRIAL

- i BOSSINI Brass Valves
- ii TEKFOLO® Bronze Globe Valves
- iii TEKFOLO® Carbon Steel & SS Ball Valves
- iv GLEN C I Ball Valves
- v COMAP Balancing Valves
- vi SAUNDERS Diaphragm Valves
- vii TEJI Carbon Steel Ball Valves Stainless Steel valves



Control Valves & Actuators & Petrol Products

V VALVES - CONTROL & ACTUATORS

- i Control Valves - ValvTechnologies
- ii Actuators - Pneumatic and Electric -(MAXAIR)
- iii Hydraulic Control Valves



U FIRE / PETROL PRODUCTS

- i Petrol Fittings
- ii Fire Fighting Equipment



Pipe Couplings & Waterworks Valves

F PIPE COUPLINGS and JOINTING

- i Pipe Couplings (KLAMFLEX)
- ii Junior Galvanised Couplings (MECH)
- iii Stainless Steel Repair Couplings (CASCADE)
- iv Victaulic Couplings and Fittings (KLAMBON & MECH)
- v Cast Iron Short Collar Couplings (HIC)
- vi Pipe Jointing Materials (Bolts, nuts, gaskets and Sealing)



O VALVES - WATERWORKS

- i AVK Valves (ALL types) - SANS 664
- ii VAG RSV Valves (ALL types) - SANS 664
- iii VENT-O-MAT Air Release Valves
- iv A.R.I Air Release Valves
- v WOODLANDS Fire Hydrant Valves & Accessories



Watermeters & Civil Products

S WATERMETERS

- i ELSTER KENT Water Meters -SANS 1529
- ii ELSTER KENT Water Meters in Boxes
- iii BULK Water Meters



T CIVILS PRODUCTS

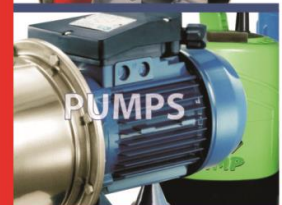
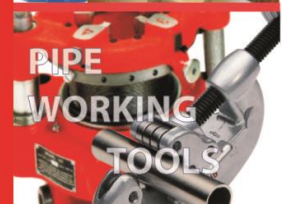
- i TEKFLOR[®] Ductile Iron Manhole Covers & Frames -SANS 50124
- ii Cast Iron Manhole Covers & Frames
- iii Polymer Concrete Covers & Frames - SANS 1882
- iv Plastic Valve/Meter Boxes
- v TEKFLOR[®] C I Fittings for PVC - Bitumen - SANS 52842
- vi TEKFLOR[®] C I Fittings for PVC - FBE - SANS 52842
- vii Ductile Iron Pipe & Fittings -EN 545/ISO 2531
- viii SUPERCASE Pipe and Fittings
- ix STARWAY HDPE Stormwater & Drainage Piping
- x FULLFLOW C.I Roof Outlets



DPI Trading

The most trusted name in quality products & brands

Value Add Solutions



DAWN

Member of the Dawn Group

Pipework & Control Valves

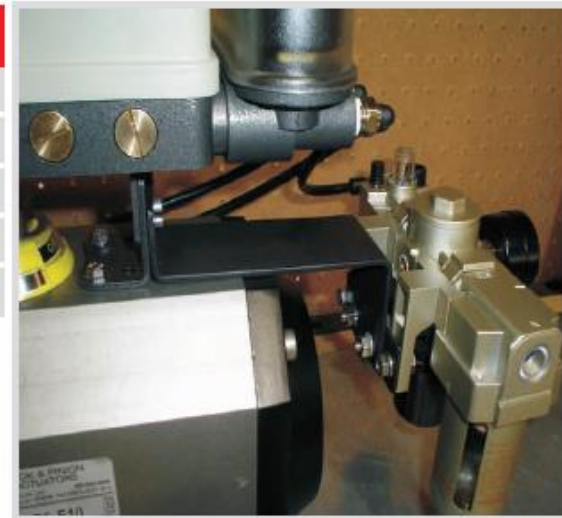
A. PIPEWORK

- * Assist Engineers with selection specification and logistics of Pipeline Projects in Ductile Iron material
- * Pipework Fabrication to Engineers Drawings
- * Cutting & Threading of Steel Piping
- * Flanging and Stub-ends for various Pipe Materials
- * Pricing of Bill of Quantities, with alternatives



B. CONTROL VALVES

- * Technical data and manuals available
- * Supply and Commissioning of specialized Control Valves & Actuators
- * Selection and Sizing of Actuators
- * Site assessment on energy and leakage losses on various valves
- * Specification assistance



Pumps & Irrigation

C.PUMPS & IRRIGATION

- * Pump Station 2D and 3D design offering. Solidworks & CAD
- * Bill of Quantity construction, as well as draft Project Specifications
- * Project Management, where required
- * Commissioning, including operator manuals and training
- * Golf Course and Commercial Irrigation design
- * Turnkey Project Facilitation
- * Recommendation of approved contractors



SCOPE OF WORK

- * Domestic and Commercial Irrigation Pump Sets
- * Air Conditioning Pump Sets
- * Bulk Water Transfer Systems
- * Golf Course Pumping Systems
- * Commercial Building Pressure Management Systems
- * Landscape Irrigation Boosters
- * Fire Protection Booster Packages
- * Bulk Drainage Transfer
- * Golf Course & Commercial Irrigation Turnkey Design Package



Key Testament of Projects Completed

Project	Year	Scope of work	Area
Orange River bulk water supply pipeline	2011	Sourcing, supplying, inspecting, delivering and offloading of 11.5km's of 500mm ductile iron pipe	Colesberg
Ekurhuleni Pumping Main pipeline upgrade	2011	Supply of large bore steel pipe to replace existing leaking pump main	Springs (Johannesburg)
Mbombela FIFA Stadium	2010	Pump station & field irrigation. (Design, supply & project management)	Mbombela (Nelspruit)
ACSA airport upgrades	2009	Supply of pipework & fittings for fire protection lines and fuel lines	OR Tambo Cape Town International
Eye of Africa Golf Course Estate	2008-2010	Design, install, commissioning & maintenance of housing water supply & irrigation booster system for golf course, including supply & delivery of all irrigation controls & equipment	Johannesburg
Omeya Golf Estate (Namibia)	2011	Supply of irrigation pipes, fittings and specialised irrigation sprinklers & control systems	Namibia
Mecure Hotels reticulation booster pump sets	2011	Design, install & commission of pump booster sets and water storage system.	Midrand
Transnet Port Authority pipeline upgrade	2009	Replace corroded steel pipe with alternate PVC shouldered pipes, for shore to ship water transfer	Cape Town
Sterkfontein Qwa Qwa phase 2 bulk water supply	2011	Source, supply, foreign inspection, delivery & offloading of 18km's of ductile iron pipe & valves	Sterkfontein
Transnet Fire Mains upgrade	2011	Proposed, testing, specification, supply & delivery of valves for sea water applications	Durban
Moutse East West Bulk Water Supply	2013	Supply of 64km 400mm K9 & 15km 600mm Ductile Iron Pipe	Greater Sekhukhune District Municipality
Johannesburg Water Domestic Meter Replacement Contract	2013	Supply of 33000 domestic water meters	City of Johannesburg
Ekurhuleni Bulk Meter Replacement Contract	2013	Supply of waterworks valves	Ekurhuleni Metro



DPI Trading

The most trusted name in quality products & brands

www.dpitrading.co.za

VISIT OUR “NEW” WEBSITE

The screenshot shows the DPI Trading website interface. At the top, there's a navigation bar with links: Home, About Us, Products, B-BBEE Certification, Vision & Mission, Newsletter, Credit Application, and Contact Us. Below this, a 'Welcome to DPI Trading' message is displayed. The main content area features a grid of product categories including Steel & D.I. Pipe, PVC & HDPE Pipe, Fittings, Valves, Rigid Tools, Irrigation, and Pipe Couplings. A sidebar on the left contains 'Quick Info' (A-BBBE Certification, About Us, Contact Us), 'Visit Inclusion', and 'Visit Inclusion'. A central section titled 'We Supply & Service' displays a grid of product images. To the right, there's a 'Our Products' section featuring logos for MECH, AquaLow, AVR, and elster. A red box with white text highlights the following features:

- * Quick links & Info
- * Downloadable Catalogues
- * Current prices by category
- * And much more.....

Callout boxes point to specific website elements: a grid of product images, a SABS certification certificate, an EMPOWERDEX Level Three Contributor certificate, and a technical drawing of a valve.

www.dpitrading.co.za



Conclusion

- DPI Trading - The one stop shop for the water industry.
- 17 Branches with stock and service in Southern Africa.
- Trucks running between branches to replenish stock.
- All products in the incredibly wide range comply with quality specifications.

THANK YOU